



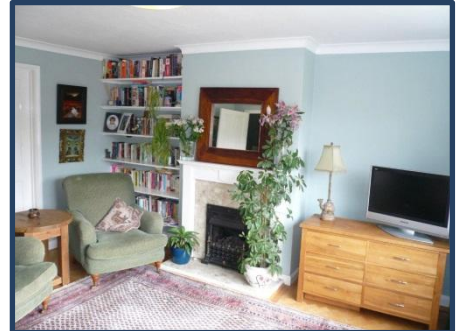
TO LET

**LOVELL CLOSE, HENLEY ON
THAMES, OXON, RG9 1PX**

£1695 pcm



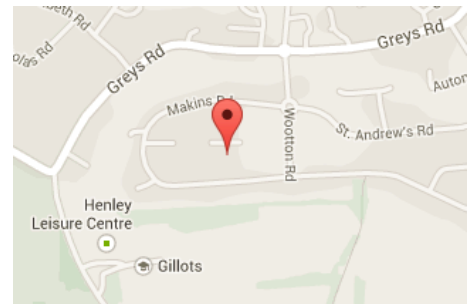
A spacious 3/4 Bedroom family home in a sought after location close to local schools with garage and parking.




A spacious 3/4 Bedroom family home in a sought after location close to local schools with garage and parking.

- Unfurnished
- EER Rating: D
- Council Tax Band: F
- Available End of June

Directions Map:



EPC:

Energy Efficiency Rating		Current	Potential
Very energy efficient - lower running costs			
(92 plus) A			
(81-91) B			
(69-80) C			
(55-68) D		58	75
(39-54) E			
(21-38) F			
(1-20) G			
Not energy efficient - higher running costs			
England & Wales		EU Directive 2002/91/EC 	

Entrance Hall, Living Room,
 Kitchen / Dining Room, 3/4
 Bedrooms, Family Bathroom,
 Downstairs Cloakroom, Outside
 office space, Garden, Garage and
 Parking