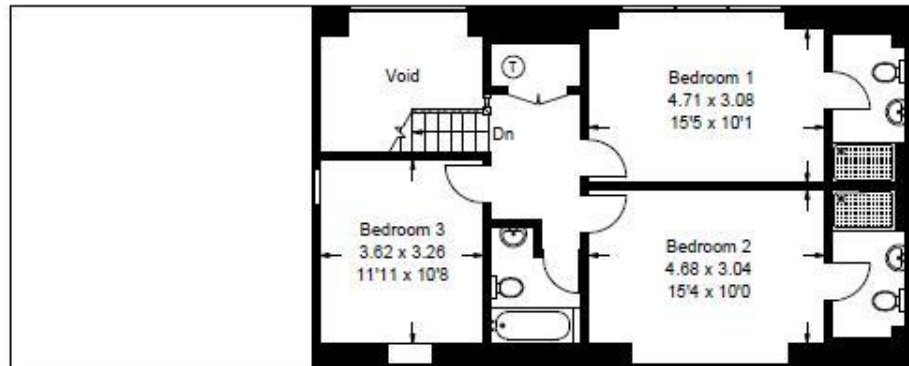


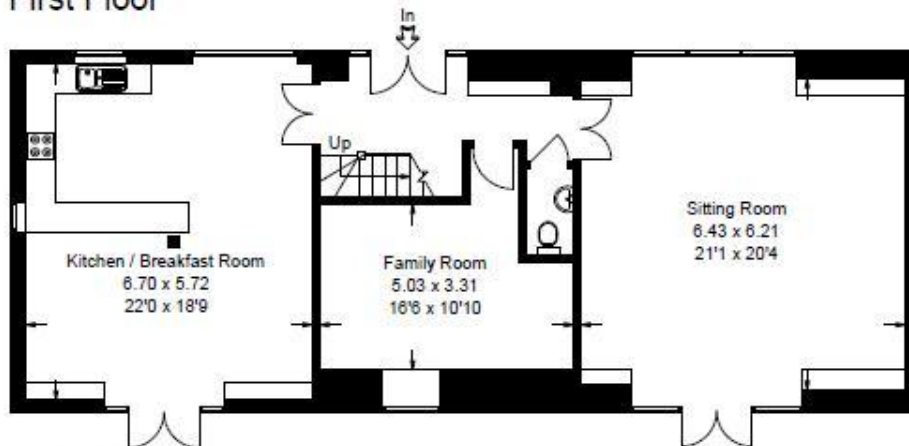
Unit 1, Park Farm Barns, Goring, Oxfordshire

Gross internal area (approx) :-
Unit 1 :- 179 sq m / 1926 sq ft (excluding void)
Garages :- 28 sq m / 301 sq ft

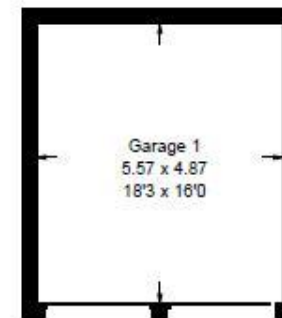
For identification only. Not to scale.
© Floorplanz Ltd



First Floor



Ground Floor



Garage

(Not Shown in Actual Location/Orientation)