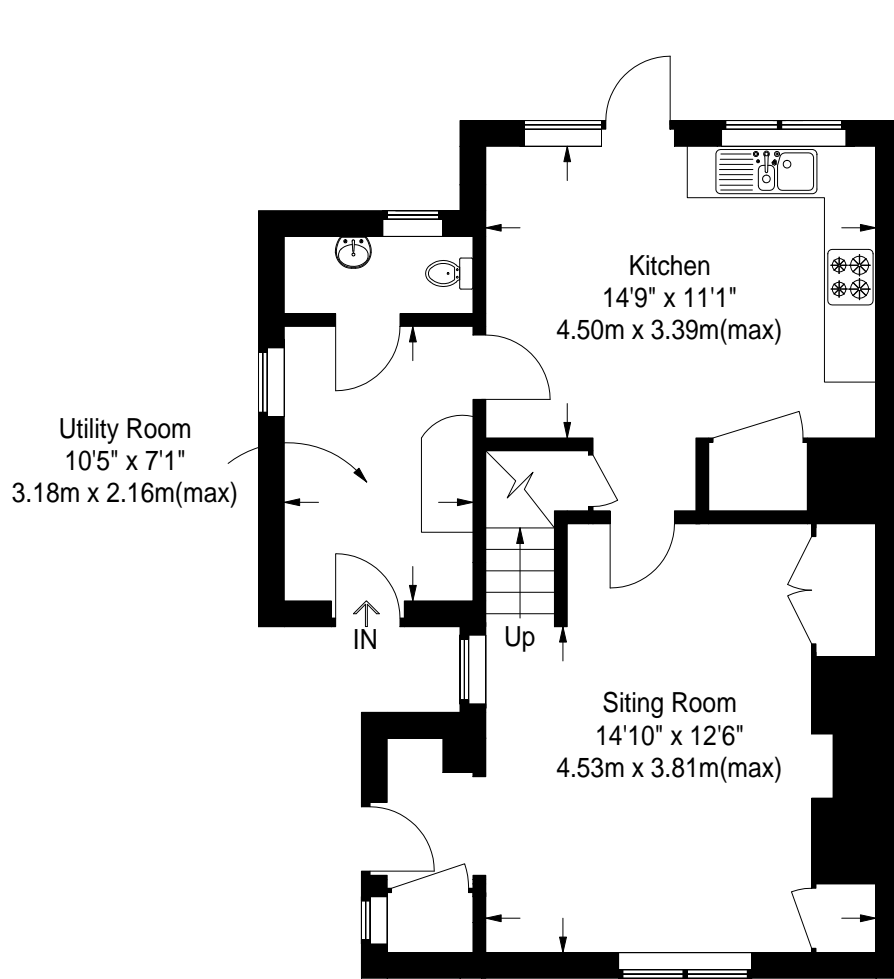
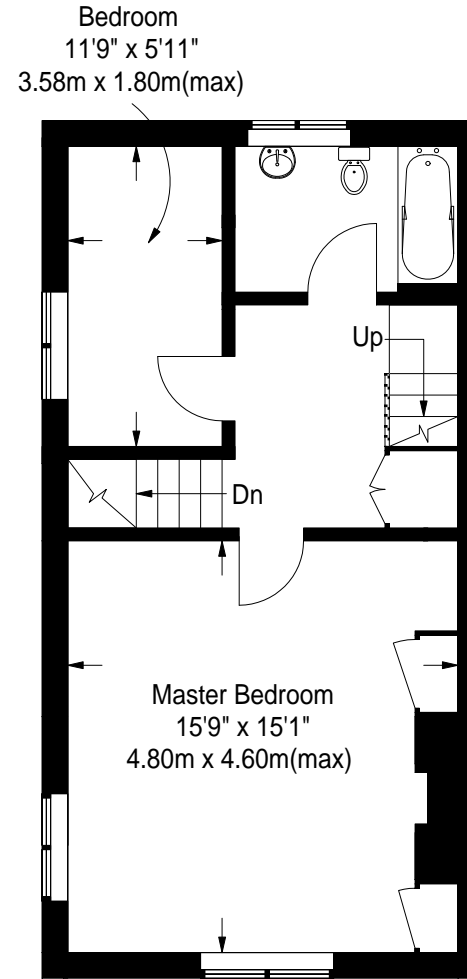


Jackdaw Wood OX49 5AA

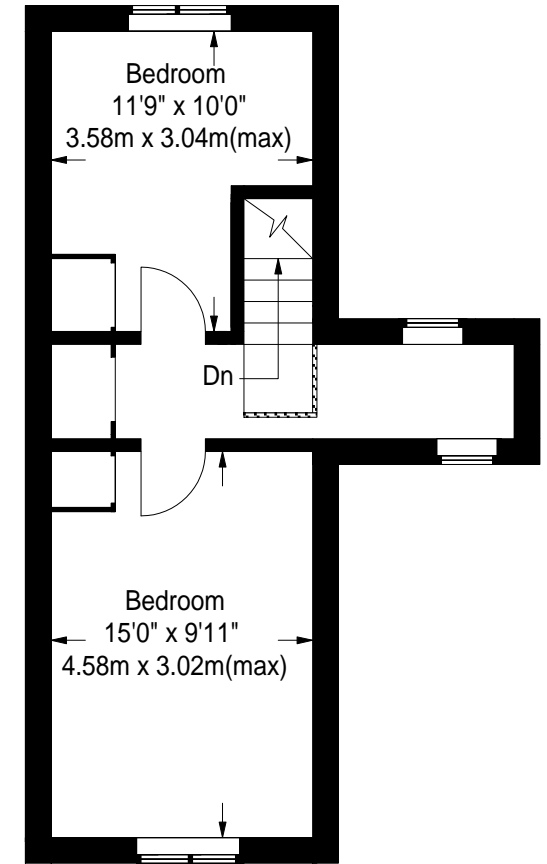
Approximate Gross Internal Area
Ground Floor = 55 sq m / 592 sq ft
First Floor = 42 sq m / 452 sq ft
Second Floor = 31 sq m / 333 sq ft
Total = 128 sq m / 1377 sq ft



Ground Floor



First Floor



Second Floor