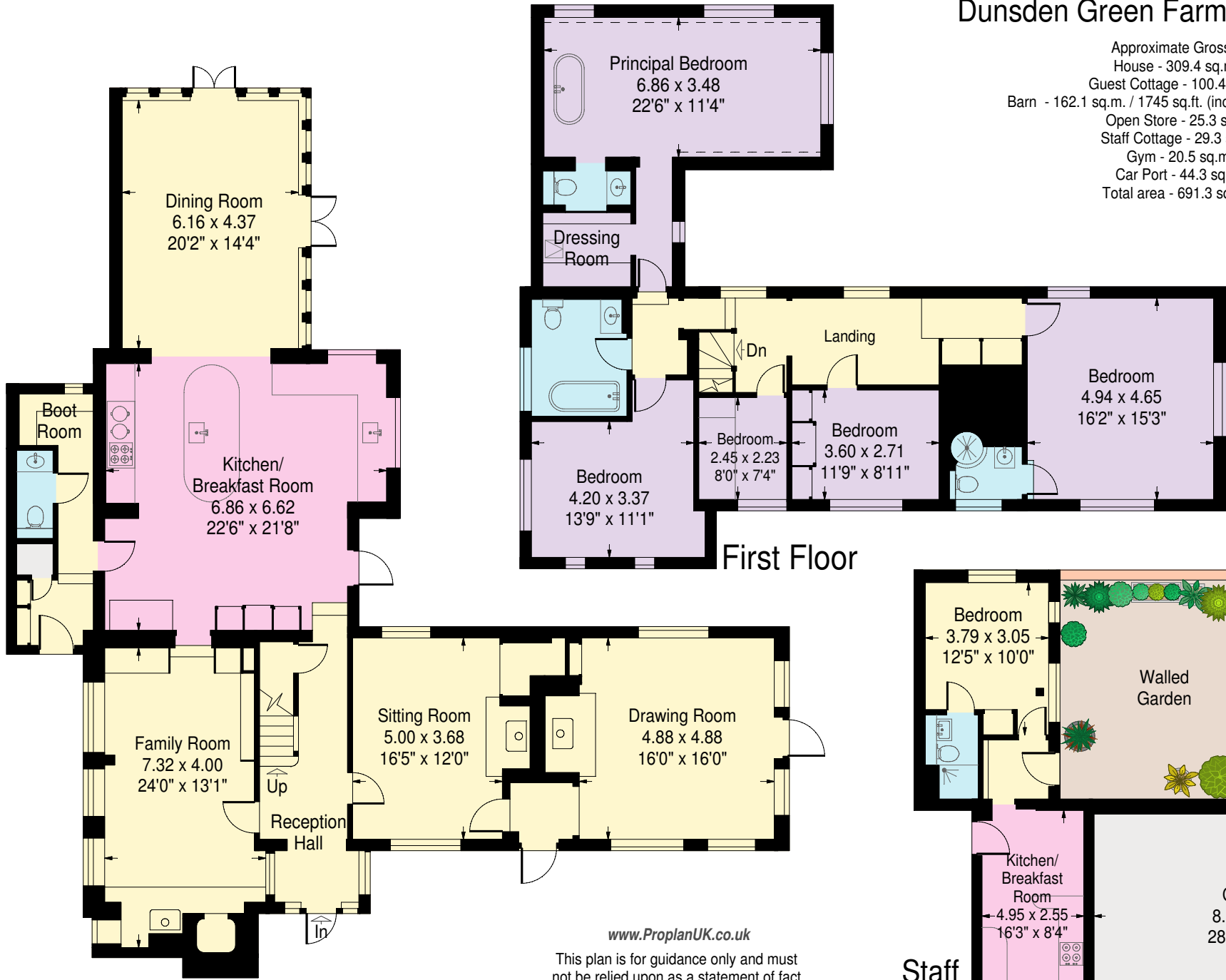
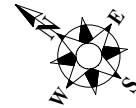


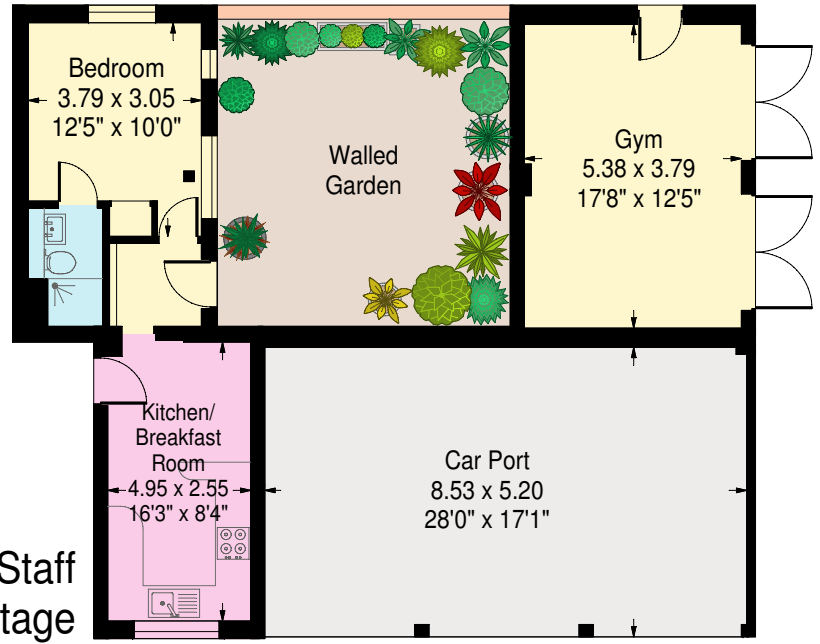
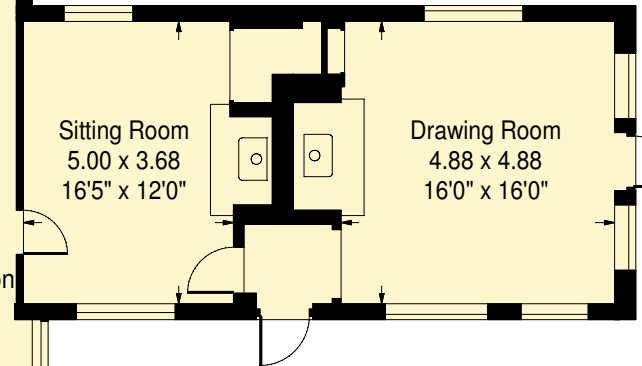
# Dunsden Green Farmhouse, Oxfordshire

Approximate Gross Internal Area:  
 House - 309.4 sq.m. / 3330 sq.ft.  
 Guest Cottage - 100.4 sq.m. / 1080 sq.ft.  
 Barn - 162.1 sq.m. / 1745 sq.ft. (including guest bedroom & studio)  
 Open Store - 25.3 sq.m. / 272 sq.ft.  
 Staff Cottage - 29.3 sq.m. / 315 sq.ft.  
 Gym - 20.5 sq.m. / 220 sq.ft.  
 Car Port - 44.3 sq.m. / 477 sq.ft.  
 Total area - 691.3 sq.m. / 7441 sq.ft.



First Floor

Ground Floor



Staff Cottage

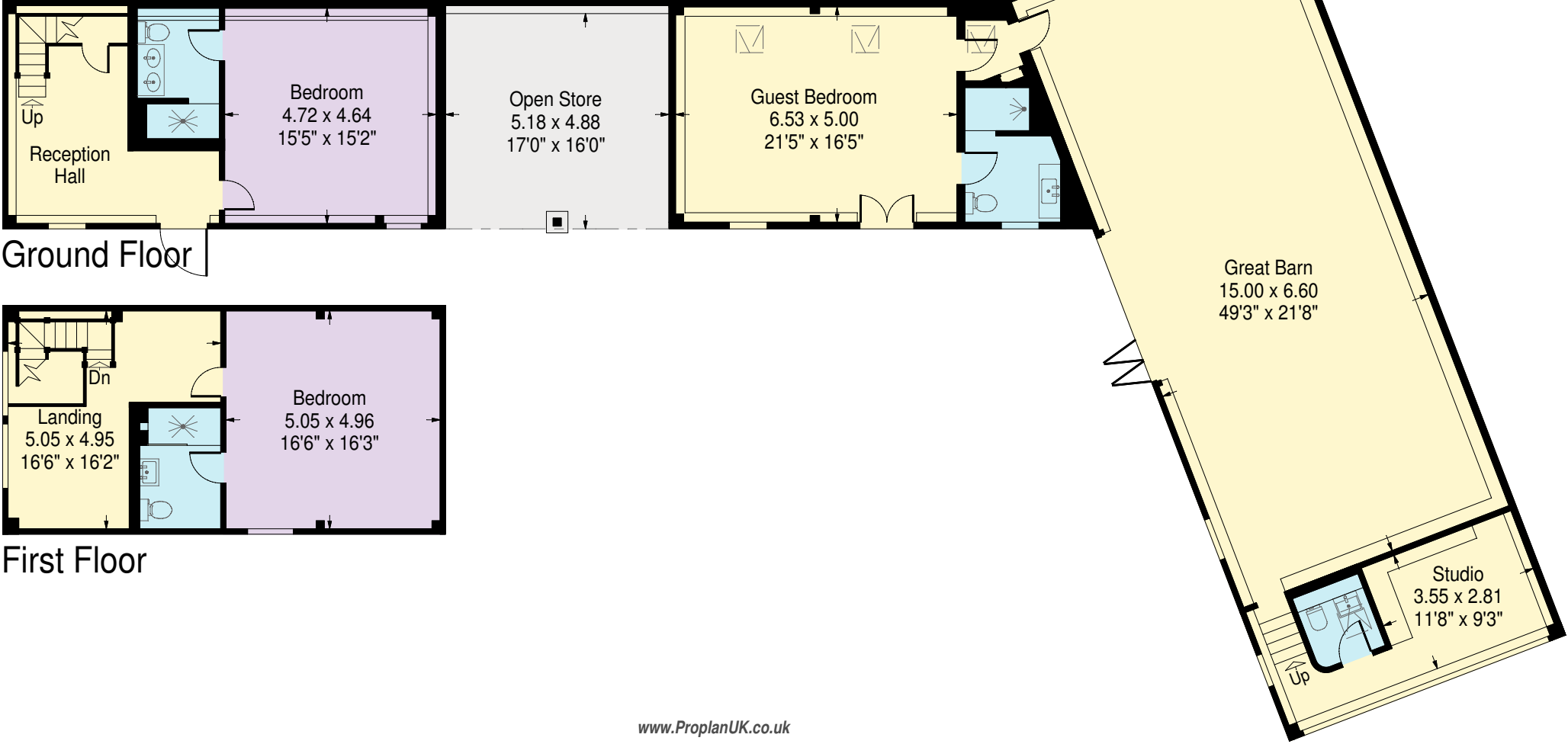
[www.ProplanUK.co.uk](http://www.ProplanUK.co.uk)

This plan is for guidance only and must not be relied upon as a statement of fact. Attention is drawn to the Important Notice on the last page of text of the Particulars.

# Dunsden Green Farmhouse, Oxfordshire



## Guest Cottage & Barn



[www.ProplanUK.co.uk](http://www.ProplanUK.co.uk)

This plan is for guidance only and must not be relied upon as a statement of fact. Attention is drawn to the Important Notice on the last page of text of the Particulars.